

WSU
PANHELLENIC
COUNCIL

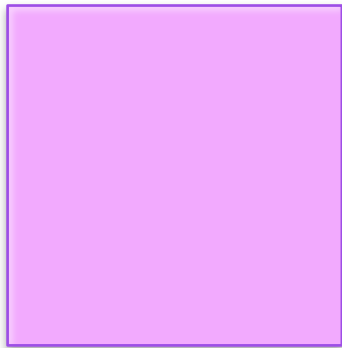
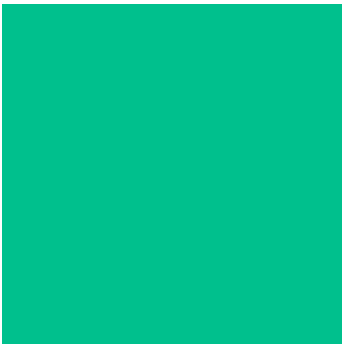


*Add a
Chapter
To Your
Story*

FORMAL
RECRUITMENT
2013

ΔΦΕ
DELTA PHI EPSILON

ΣΣΣ
SIGMA SIGMA SIGMA



WELCOME TO WSU'S GREEK LIFE!

College is a great time to try new things and to get involved in your school and within your community! A great way to do this is by joining a sorority! Here on the Winona State campus, Greek Life is growing into a larger and more developed community. We currently have two national sororities, Delta Phi Epsilon and Sigma Sigma Sigma; we also have a local sorority, Phi Theta Chi, and 4 fraternities, Tau Kappa Epsilon, Pi Lambda Phi, Sigma Tau Gamma, and Phi Beta Sigma. Also, part of our Greek community is the business fraternity Delta Sigma Pi. Furthermore, the women of Panhellenic are here to make your recruitment process as smooth as possible! Below is more information about your Recruitment Counselors!

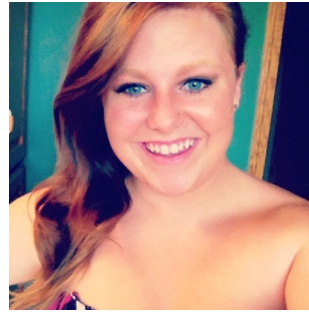


MEET THE RECRUITMENT COUNSELORS!

Henriette Hoyos
Panhellenic President
Year: Junior
Major: Criminal Justice
Emphasis on Law
Enforcement



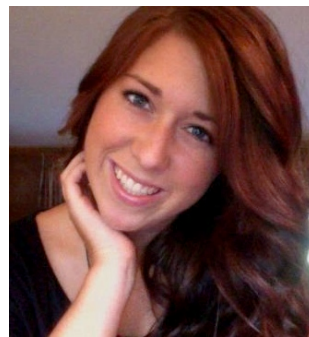
Ashley Hanson
Panhellenic Vice President
Year: Junior
Major: Elementary
Education



Alle Savat
Treasurer
Year: Sophomore
Major: Elementary
Education



Carrie Geary
Secretary
Year: Junior
Major: Recreation and
Tourism Emphasis on
Commercial Recreation



Amelia O'Bert
Public Relations
Year: Sophomore
Major: Cell and
Molecular Biology



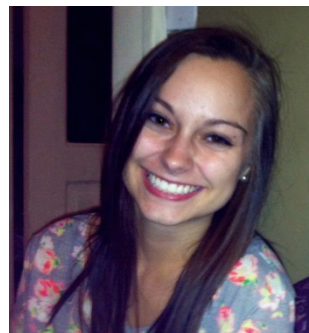
Stephanie Feye
Risk Management
Year: Senior
Major: Elementary
Education emphasis on
Early Childhood



Shannon Byrnes
Website Chair
Year: Junior
Major: Cardiac Rehab



Emma Drazkowski
Fundraising Chair
Year: Junior
Major: Criminal
Justice Emphasis on
Law Enforcement



Haley Putnam
**Recruitment
Counselor**
Year: Sophomore
Major: Broadcasting

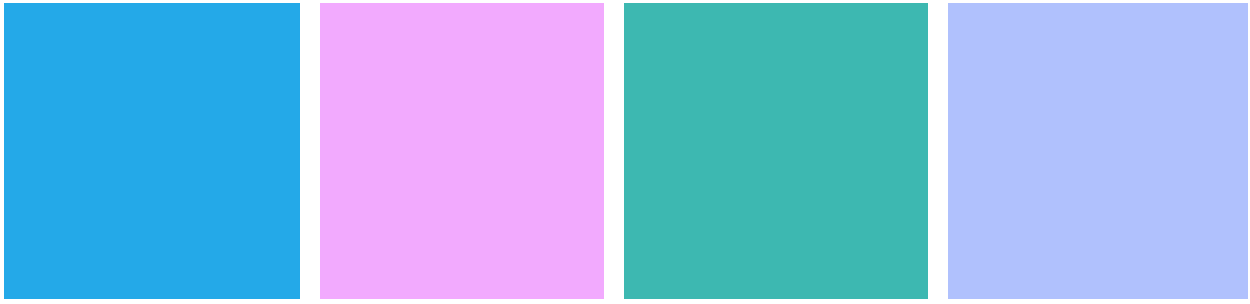


Chelsea Nesbit
Recruitment Counselor
Year: Senior
Major: Exercise
Science



TABLE OF CONTENTS

Panhellenic.....	Page 5
Greek Terminology.....	Page 5
Delta Phi Epsilon.....	Page 6
Sigma Sigma Sigma.....	Page 7
Hazing.....	Page 8
Sisterhood.....	Page 8
Big's and Little's.....	Page 8
Socials.....	Page 8
Philanthropy & Scholarship	Page 9
Community Service.....	Page 10
Greek Life & Community.....	Page 11



PANHELLENIC

Panhellenic is an organization on campus that is composed of five sisters from Delta Phi Epsilon and five sisters from Sigma Sigma Sigma. We run the formal recruitments for both sororities during the fall semester. We give up our letters to help you find yours. For the week of recruitment, you will not be told what sorority each sister is from! As members of Panhellenic, we are here to assist you through the recruitment process, answer any questions you may not get a chance to ask a sister while in the respective rooms. We are here for you at all times, please don't hesitate to ask us any question you might have, we are happy to answer them! At the end of the week we will reveal to you which sorority each of us belong to!

GREEK TERMINOLOGY

Panhellenic Association- A council between 26 National Sororities, two of which call Winona State University home.

Recruitment Counselor - A sorority member who has disaffiliated herself from her chapter during Formal Recruitment. She is trained to help Potential New Members and/or answer any questions they may have about sorority membership.

New Member - A member of a sorority who has not been initiated.

Bid - A formal invitation to join a particular sorority.

Legacy - The sister, daughter, or granddaughter of a sorority member. Being a legacy does NOT mean automatic membership into that chapter. Nonetheless, being a legacy does not hurt your chances at membership in any way.

Big Sister - A new member receives/selects an initiated member to be her big. This older member serves as a resource, role model and problem-solver for the new member.

Potential New Member - An individual participating in the recruitment process.

Quota - The specific number of potential new members each Panhellenic sorority chapter can accept.

Dues - Fees paid to the organization you are affiliated with. Dues must be paid to remain in "good standing" with your chapter.

DELTA PHI EPSILON



REQUIREMENTS:

*GPA of 2.5 cumulative must be obtained (incoming freshmen do NOT need a GPA coming in)

***New member fee** is \$65 then there is a \$100 initiation fee.

***Dues** are \$200 a semester.

ABOUT DPHIE:

***Flower:** Lovely Purple Iris

***Colors:** Royal Purple and Pure Gold

* **Mascot:** Unicorn

***Motto:** “Esse Quam Videri”
(To be rather than to seem to be)

***Big/Little reveal night**

***Star Sisters**-buddy up with an active sister that has a similar major to help you with any questions.

* **P.E.A.R.L.** program includes the 5 “S”: Sisterhood, Scholarship, Service, Social and Self.

Extra info: Founded on March 17, 1917 at the New York University of Law School.

ΔΦΕ
Delta Phi Epsilon

SIGMA SIGMA SIGMA



REQUIREMENTS:

GPA: 2.5 GPA to join, study tables, collection of A's and B's and prizes for not skipping classes each week.

New Member Fee is \$160

Dues are \$200 a semester

ABOUT SIGMA:

***Flower:** Purple Violet

***Colors:** Royal Purple and White

***Mascot:** Sailboat

***Jewel:** Pearl

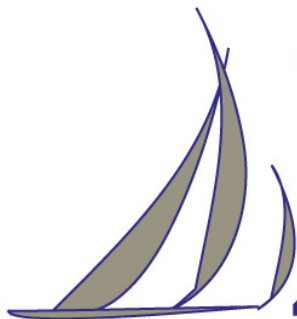
* **Motto:** Faithful unto Death & Ever Forward

***Big/Little Reveal**

* **Violet Week**

* **Pearl Sisters**

***Extra info:** Founded April 20, 1898 Longwood College (Farmville, Virginia)



Ever Forward

HAZING PREVENTION

What is hazing?

The definition of hazing includes acts that embarrass, humiliate, degrade or ridicule. Unfortunately, hazing is a rite that can often begin as early as elementary school yard bullying. The act of hazing is not a subjective one or open to subjective interpretation. Most universities and colleges with Greek communities post their anti-hazing policies online.

What is the National Panhellenic Conference's opinion about hazing?

It is a crime in most states. The National Panhellenic Conference or its 26 member groups do not tolerate hazing. NPC expects all Panhellenic women to abide by the law.

SISTERHOOD

Sisterhood is what sorority is ALL about. It's the "glue" of each sorority and what sets each one apart. When you walk into the rooms of each sorority you can feel the chemistry between them and the closeness they share. It's about trust, loyalty, truth, and memories. In sorority girls do lots of different activities such as bonfires at the lake, attending midnight movie premieres, and going to lacrosse for wing night at Buffalo Wild Wings. Sisterhood is about being there for one another through the good times and the bad. It's not about wearing our letters around campus, it's much greater, it's sacred and treasured...It's sisterhood.

BIG'S & LITTLE'S

Each new member is given a "big" sister that has been a mentor to her throughout her new member period. The new member is called a little. This bond remains even after the new member has initiated.

SOCIALS

Socials are a great way to meet many people from all different organizations! Each sorority has socials with all the fraternities and sororities on campus! We do things such as shopping, bowling, dinner, volleyball & movie nights. Socials are a great way to stay connected to everyone involved in Greek life.

PHILANTHROPY & SCHOLARSHIPS

DELTA
PHI
EPSILON

SIGMA
SIGMA
SIGMA

THE CYSTIC FIBROSIS FOUNDATION

helps benefit those with the genetic disease through research, grants, and awareness campaigns.

THE NATIONAL ASSOCIATION OF ANOREXIA NERVOSA AND ASSOCIATED DISORDERS (ANAD)

An ANAD candlelight vigil is held every International Service Day in order to raise awareness of the dangers of eating disorders.

THE DELTA PHI EPSILON EDUCATION FOUNDATION

helps give members and their children the opportunity to further their education through scholarships, grants, and loans.

ROBBIE PAGE MEMORIAL FOUNDATION

originally used for polio research but upon its' cure awards grants to hospitals for play therapy.

THE SIGMA SIGMA SIGMA EDUCATIONAL FOUNDATION

also awards scholarships to members to help further education.

*Tri Sigmas have recently merged their philanthropies and scholarships into one organization, The Sigma Sigma Sigma Foundation whose mission is to provide transformational philanthropy by funding innovative leadership training for women, awarding scholarships, and investing in life-enhancing children's therapy programs.

COMMUNITY SERVICE

DELTA
PHI
EPSILON

SIGMA
SIGMA
SIGMA

AMERICAN RED CROSS BLOOD DRIVE

Deepher's help run the blood drive and also donate their own blood!

KIDS FIRST CENTER

They play with the children from kid's first. In the past they have helped them write pen pal letters to boys from an orphanage in Jamaica.

VOLUNTEER AT THE HUMANE SOCIETY

Deepher's spend a lot of time playing with the animals at the humane society and also help with the feeding and cleaning

SAUER NURSING HOME

Help the elderly with creating crafts to decorate their rooms!

SALVATION ARMY

Help clean up the Salvation Army and organize the area.

RELAY FOR LIFE

This huge campus wide event helps benefit those who have battled and have passed from cancer.

YMCA

Tri Sigmas tutor children at the YMCA twice a month!

RELAY FOR LIFE

This huge campus wide event helps benefit those who have battled and have passed from cancer.

VFW FISH FRY

Sigmas help during the fish fry once a year at the veterans club

HIGHWAY CLEANUP

Once a semester Sigmas clean up HWY 14!

GREEK LIFE & COMMUNITY

At Winona State University there is a Greek community made up of group of diversified men and women belonging to eight different fraternities and sororities. This community offers members with opportunities for growth and excellence in academic, leadership, service learning, and social arenas. We have two governing councils. They are called the National PanHellenic Council and Greek Council. Greek Council is where two members from each organization come together and meet once a week to find out what each chapter is doing and accomplishing in their organizations. Greek Council puts on Greek Week, which is a competition between each organization. Greek Week helps to build bonds and see which organization is the best for the semester. Socials are put on so each organization can get to know one another. The bond between the Greek organizations are very strong, we all are there to support one another through everything.

LASTLY, it's important to have fun throughout this entire week! Recruitment is such a fun time to meet new girls and get to know more about what your campus has to offer! We are so excited that you have interest in becoming part of our sororities. Each recruitment counselor here has been impacted greatly from the experiences they have had within their sorority. We can't wait for you to also learn from the bonds, friendships and sisterhoods that Delta Phi Epsilon and Sigma Sigma Sigma have to offer!